

We unite world class research with a real world approach, engaging with academia, industry, government and community groups to shape policy and pioneer meaningful change in our cities.



Cities Institute



Cities have been the epicentre of civilisation for millenia. Crowded, complex and rich in humanity, they have driven prosperity, inspired innovation and embodied our diversity.

A century ago, just 10 percent of the global population lived in cities. By 2050, around two thirds of the world will seek to build their lives in urban centres.

The Cities Institute proposes a better future for people by bringing together innovative thinking around people, place and culture.



What we do

We unite world class research with a real world approach, engaging with academia, industry, government and community groups to shape policy and pioneer meaningful change in our cities.

Why we're different

We lead with deep experience in design methods, sustainable architecture and healthy urban and strategic planning.

Academic thinking grounds our practical initiatives in robust research. We connect those with insights with those that shape and deliver city outcomes, ensuring a practical application for policy, change and impact that ultimately benefits the communities around us.

How we succeed

- 1 Leverage, extend and accelerate research across all faculties within UNSW and beyond.
- 2 Ensure that research is accessible and impactful, ultimately used to adjust policy, shape opinion and affect change.
- 3 Develop creative pathways to solutions through conversation and collaboration.
- 4 Foster ongoing relationships with government, community and industry partners.
- 5 Fast track innovation and productivity around public infrastructure.
- 6 Be informed by a First Nations methodology.
- 7 Launch real projects that show the shift in our thinking and exemplify change in our urban environments.
- 8 Listen to the lived experiences of our diverse communities.

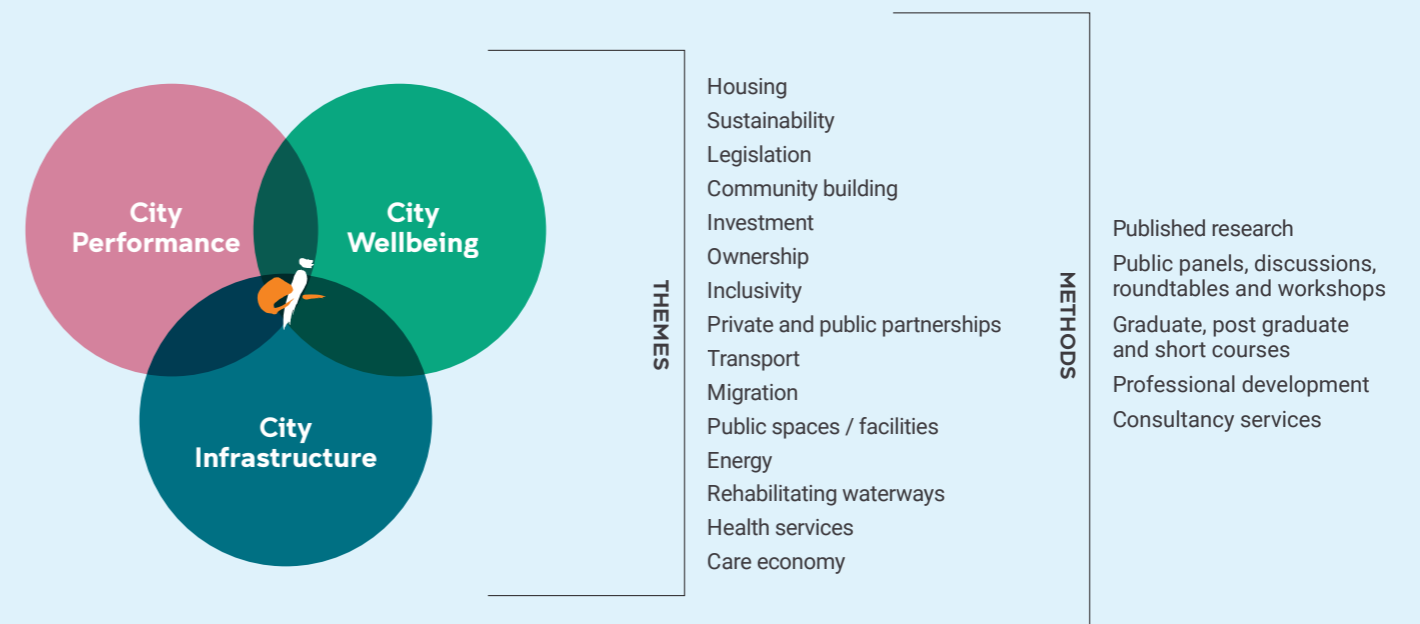


Our real world approach gives us capacity for enquiry, passion for engagement and the technical skills to anticipate and prepare for change.

– UNSW Cities Institute

Our approach

Our strategy and research directions are shaped collaboratively, using city infrastructure, city performance and city wellbeing as the core elements that guide all of our pursuits.



Global Alliances

We've formed strategic partnerships with major universities across the globe to amplify our expertise and help to solve pressing issues.



APRU is a network of 45 premier research universities from 16 economies around the Pacific Rim.



The Group of Eight (Go8) is a coalition of leading Australian universities, intensive in research and comprehensive in general and professional education.



The PLuS (Phoenix London Sydney) Alliance combines the strengths of three leading research universities in addressing challenges in global health, social justice and sustainability while progressing the responsible innovation of advanced technologies.



UNIVERSITAS 21

Universitas 21 is the leading global network of research intensive universities.



A global network of universities promoting evidence-led solutions to tackling climate change.



SYDNEY QUANTUM ACADEMY

The Sydney Quantum Academy aims to develop a quantum ecosystem through education, industry, community engagement and entrepreneurship.



TEDI seeks to transform engineering education to change lives – both for higher education students and for users of the products they design and make.



A collaboration between experts in health, research and education, MBG develops innovative ways to deliver better healthcare to NSW communities.



Project Mezza develops ways to deepen existing collaborations between UNSW Sydney and Western Sydney University.



The NUW Alliance seeks out big collaborations that make a difference, unlocking new value, impact and benefit for our communities



The USRN brings together universities from around the globe interested in embedding social impact into their activities.



This collaboration monitors trends in poverty and inequality over time, explores drivers, and develops solutions to sharpen the focus and stimulate action to tackle these policy challenges.



Multidisciplinary knowledge¹

By harnessing UNSW's trademark disciplinary excellence across the built environment, design, economics, climate science, engineering, energy, health and social sciences, we offer holistic, commercially viable solutions that embrace a comprehensive and long term perspective.

6

FACULTIES

Arts, Architecture & Design
Business
Engineering & Technology
Law & Justice
Medicine & Health
Science & Environment
UNSW Canberra at ADFA*

45

SCHOOLS

125

CENTRES & INSTITUTES

Collaborate with us

citiesinstitute@unsw.edu.au

UNSW Cities Institute
Parramatta Innovation Hub
Parramatta NSW 2150

In the spirit of reconciliation, the UNSW Cities Institute acknowledges the Traditional Custodians of Country throughout Australia and their connections to land, waters and community. This publication was prepared by the UNSW Cities Institute. August 2023

1. As at 2019. *Australia Defence Force Academy (ADFA). Copyright ©2023 UNSW Sydney. All rights reserved. CRICOS Provider Code 0098G.



We support the Sustainable Development Goals



UNSW
Cities Institute