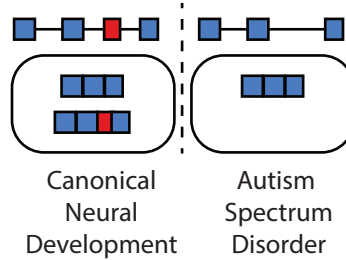
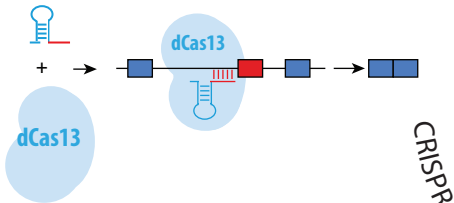


Role of RNA in neurodevelopmental disorders



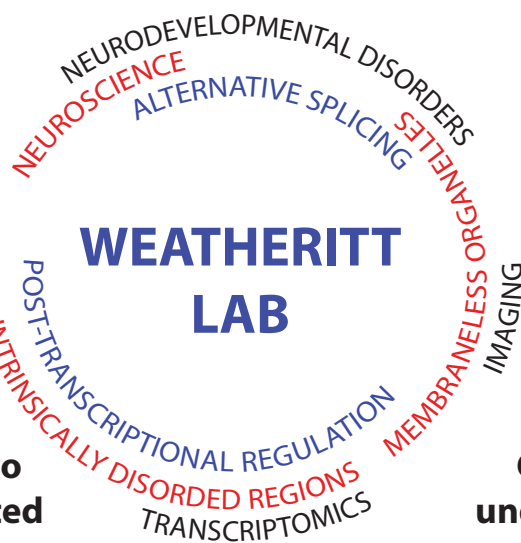
What is the phenotypic impact of splicing mis-regulation in neurodevelopmental disorders?

CRISPR screening

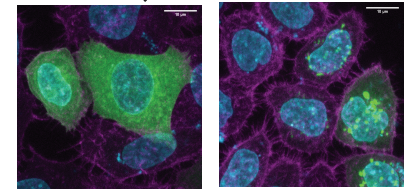


Screening is believing:

Can we use CRISPR screens to investigate role of misregulated RNA?



Imaging



Control



ASD

Seeing is believing:

Can we use image analysis to understand roles of misregulated RNA?

References:

Irimia et al. Cell

Quesnel-Vallières et al. Nature Review Genetics

Ha et al. Nature Communications



Garvan Institute
of Medical Research

EMBL
Australia



Website: <https://weatheritt2.github.io/>

Email: r.weatheritt@garvan.org.au